

WATER RESOURCES



Gordon

CHANTILLY, VA
MARTINSBURG, WV

AT THE FOREFRONT OF STORMWATER DESIGN FOR OVER FORTY YEARS

“GORDON’s water resources team developed an innovative stormwater design strategy and watershed analysis that resulted in a net reduction in required BMP/SWM facilities, saving a **hundred thousand dollars** in construction and maintenance costs

Matt Kroll, PE
Willowsford, LLC

A PROACTIVE APPROACH



▲ Woodland Park East, Fairfax County, VA, stormwater park

GORDON’s water resources team is included from project inception to determine all stormwater concerns are addressed

Our approach promotes coordination between all stakeholders, including architects, building engineers, and facility owners



▲ Tyrol Hill Park, Arlington County, VA, stormwater management plan & completed park

MINIMIZING COSTS

One Loudoun, Ashburn, VA ▼

Whether simple or complex, GORDON minimizes the impact of compliance through a proven optimization process

This balances the design, utilizes the entire site, integrates the buildings, and factors maintenance-related costs

▼ US Coast Guard HQ, Washington, DC. 3rd largest green roof in the US

GREEN ROOFS, BIORETENTION & SRCs



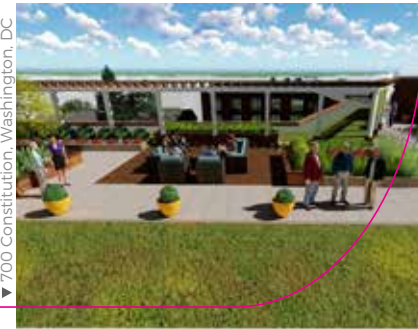
▲ Bioretention pond

GORDON turns compliance regulations into amenity solutions, such as bioretention gardens and green roofs

Additionally, GORDON has led the efforts of Stormwater Retention Credits (SRCs) on many federal, local, and private development facilities within Washington, DC



▼ 700 Constitution, Washington, DC



MS4 PERMITTING

Municipalities rely on GORDON to assist in complying with their MS4 permitting requirements

Clients praise GORDON's technical guidance in support of the mission of effective stormwater control



▼ One Loudoun, Ashburn, VA

POND RETROFITS



▼ Innovation Station Metro Boardwalk, Herndon, VA

▲ Wilson School, Arlington, VA



Pond retrofits are often used by municipalities to meet their MS4 permitting goals

Among many Best Management Practices (BMPs) options, GORDON designs pond retrofits to assist with these efforts

BMP DESIGN

▼ Fairfax County Public Safety Center, Fairfax, VA ▼



BMPs, such as permeable pavement and rain gardens, are effective and practicable solutions to reducing stormwater runoff and pollution

▼ Towers Park, Arlington, VA, rain garden



▲ Rocky Run Park, Arlington, VA
underdrainage system and permeable pavement

BMP INSPECTIONS



As a complement to our permitting and design services, GORDON's expertise also includes in-field BMP construction inspections to ensure facilities are constructed as designed

EISA 438

GORDON's water resources team has assisted federal agencies with EISA 438 compliance since enacted, ranging from large DoD campuses to small administrative facilities



▼ Smithsonian National Zoological Park, Washington, DC

FAST FACTS



Department of Environmental Quality (DEQ) Combined Administrators **on-staff**

Projects within **60+** different jurisdictions and agencies



Decades of demonstrated experience designing **traditional and innovative stormwater management facilities**

▼ VCR Trail, Fredericksburg, VA, 2017 Environmental Excellence Award

▼ St. Elizabeths West Campus, Washington, DC, the first GSA project to implement EISA 438



WORK WITH THE BEST



STEVEN PANDISH, PE, LEED AP BD+C
DIRECTOR OF WATER RESOURCES
SPANDISH@GORDON.US.COM
703.263.1900

WWW.GORDON.US.COM

